

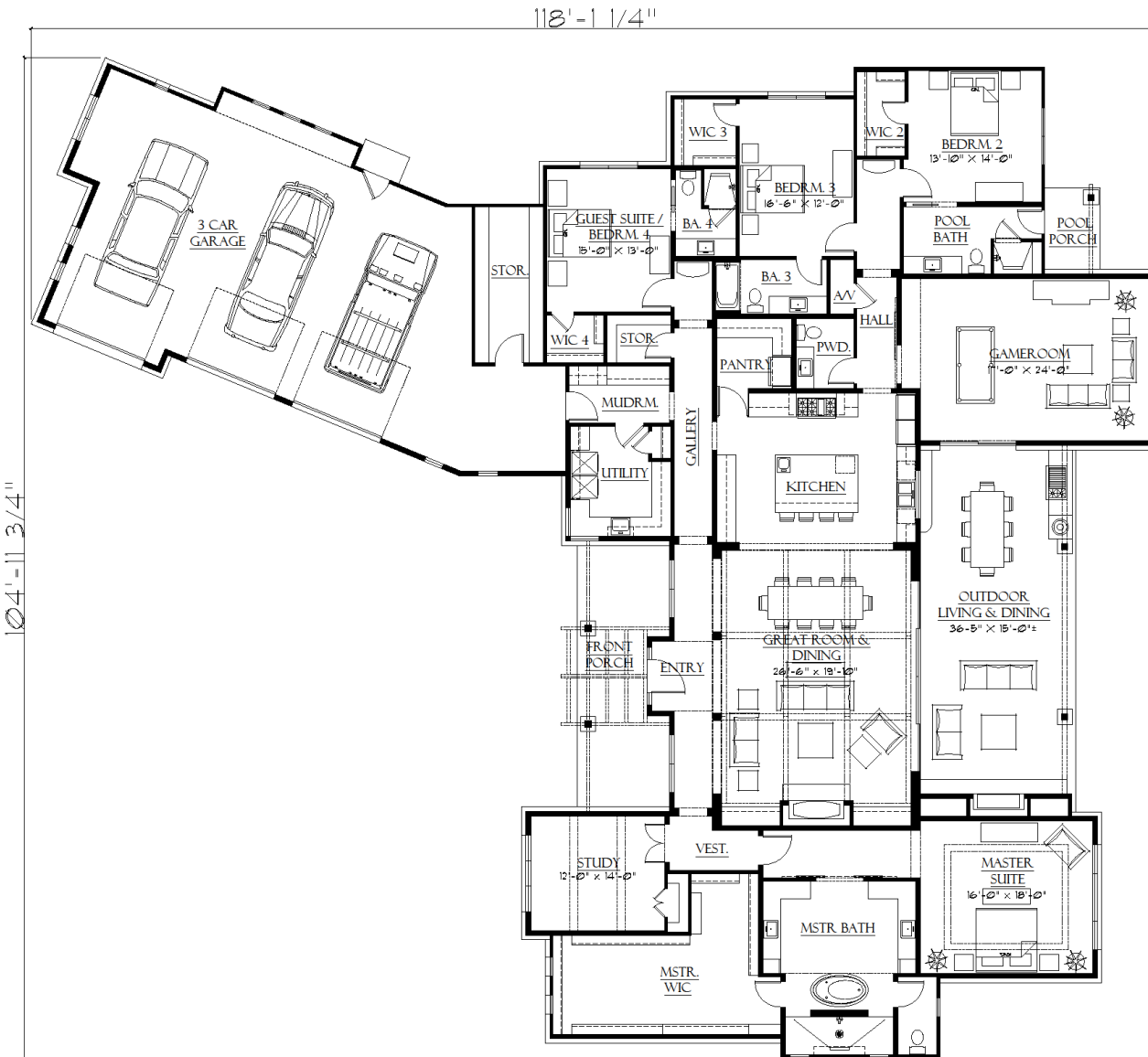


SENDERO HOMES

 GESCHKE GROUP
ARCHITECTURE
WWW.GESCHKEGROUP.COM

17108 Morning Grove

4,533 SQ FT
For Reference Only



IMAGINE A LIFE AT MADRONE CANYON

ONE STORY HOME
FEATURING
4 BEDROOMS, 4.5 BATHS,
OPEN FLOOR PLAN,
STUDY, GAME ROOM,
OUTDOOR KITCHEN, 3 -
CAR GARAGE WITH
STORAGE AREA

Call Scott @ 512 - 402 - 4540